

# HARRY KRAMM

778.995.7224

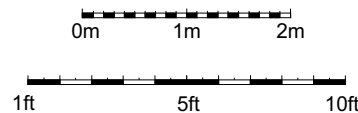
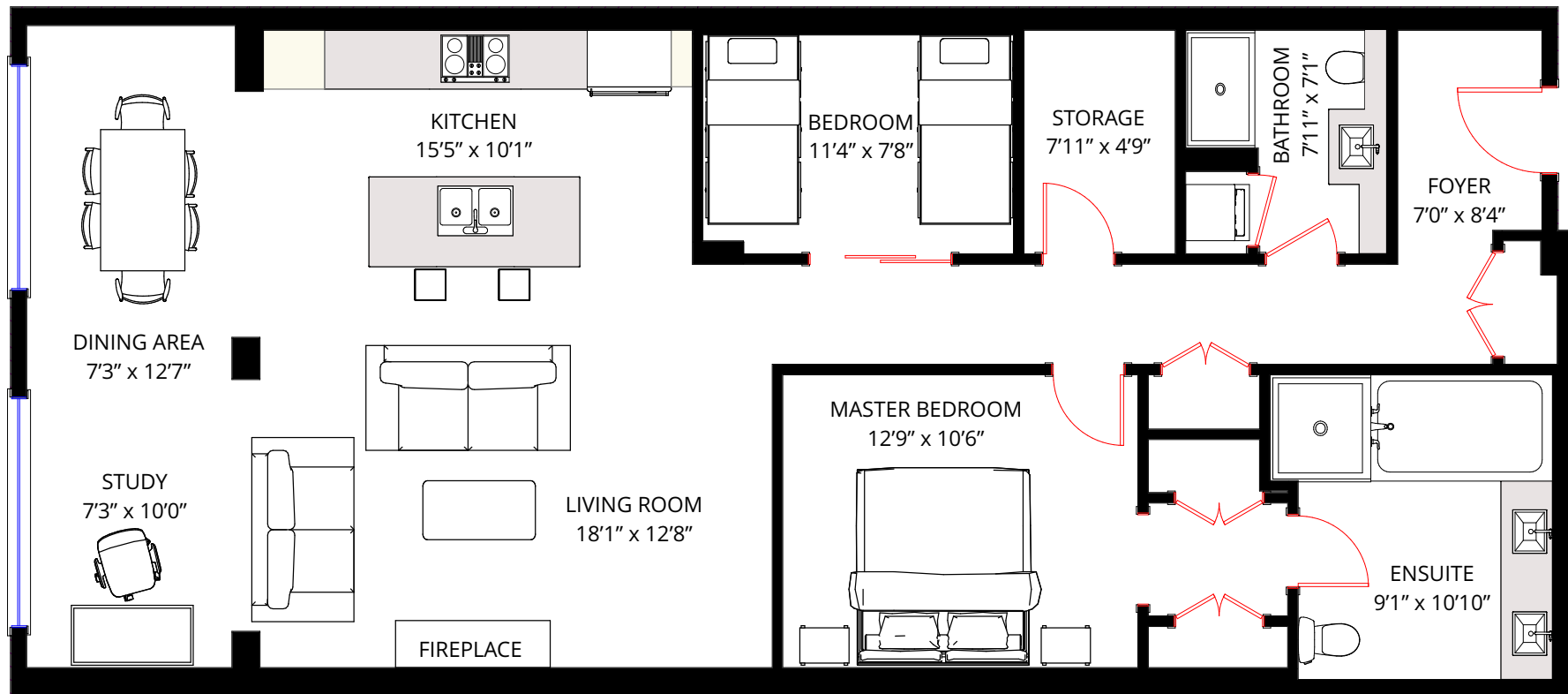
harry.kramm@evcanada.com

#303 - 1180 HOMER ST

VANCOUVER

MAIN LEVEL: 1,332 sq ft

TOTAL: 1,332 sq ft



See the 3D tour  
<http://bit.ly/2r7f0C0>



**ENGEL & VÖLKERS**

THIS FLOORPLAN IS FOR ILLUSTRATION PURPOSE ONLY AND ALL DIMENSIONS SHOULD BE CONSIDERED APPROXIMATE

*Viyae*  
innovative imaging concepts  
www.viyae.com 778 887 7994